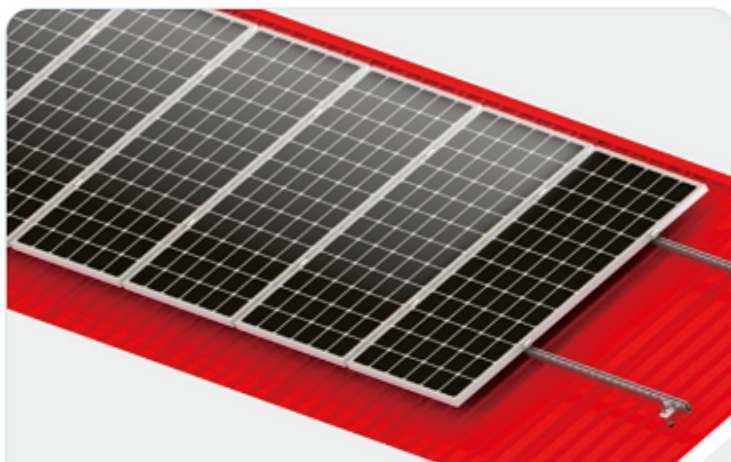




彩钢瓦屋顶支架 (双牙螺杆)



本系统由以下零部件组成/This system consists of the following components:



产品说明/DESCRIPTION:

- 安装位置/Installation place: 彩钢瓦屋面/Caigang watts roof
- 斜面支架组件/Module slop: 根据实际需求/According to the practical demand
- 拉拔力/Drawing force: 1000N
- 风力承载能力/Wind load: 40m/s、32.5kg/m²、13级
- 雪载承受力/Snow load: 70kg/m²
- 支架类型/Module type 框架/Frame
- 材料/Material: 铝型材、不锈钢/Aluminum, stainless steel
- 颜色/Colour: 本色/Natural
- 使用年限/Warranty time: 25 years.

优势/ADVANTAGES:

1. 美观/Good Appearance.
2. 简便易安装/Easy and flexible Installation.
3. 多样化设计/Diversified Application.
4. 重量轻/Light dead-weight.
5. 节省安装材料/The mounting system materials are saved.

工程实例照片



1 第一步/First step

Double teeth screw Langle connection piece is fixed on the Caigang watts, as shown in figure 1:

用双牙螺杆将L角连接件固定在彩钢瓦上, 如图1所示:



Figure 1

2 第二步/Second step

The guide rail is fixed on the Langle connecting piece with inner six angle bolt, as shown in figure 2:

用内六角螺栓将导轨固定在L角连接件上, 如图2所示:

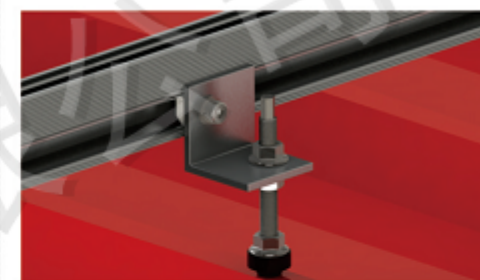


Figure 2

3 第三步/Third step

With IP block and edge block the solar component is fixed on the guide rail, as shown in figure 3:

用中压块和边压块将太阳能组件固定在导轨上, 如图3所示:

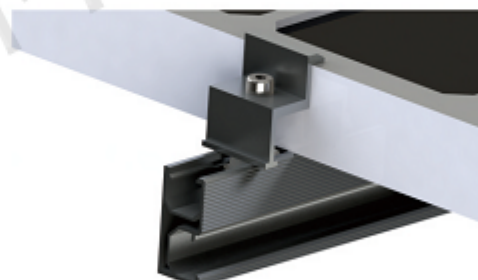


Figure 3 (a)

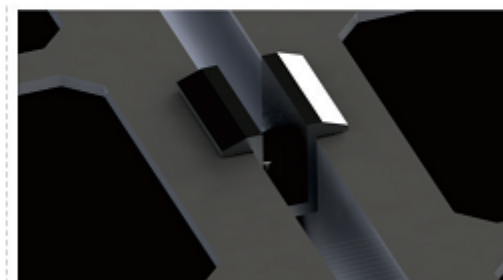


Figure 3 (b)

4 第四步/Fourth step

The installation is finished. 安装结束完成。



工程实例照片



工程实例照片